

# STARTING SOON

## GRANT CONSULTING ESSENTIALS

ADVANCING GRANT PROFESSIONALS



Partnership with Butler Consulting  
**PRESENTED BY**  
SmartEGrants

---

---

---

---

---

---

---

---

## HOW TO INCREASE YOUR VIEWING PLEASURE



- ▶ Turn off or pause all that is operating in the background, including any email, video, text, synced drives, or extra programs.
- ▶ Preempt interruptions by muting your phone, closing your door, and giving yourself the time and space to discover what is in store for your future!

---

---

---

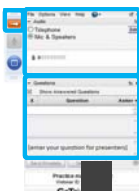
---

---

---

---

---



### Your Participation

1. Open and hide your control panel
2. Join audio:
  - Choose "Mic & Speakers" to use VoIP
  - Choose "Telephone" and dial using the information provided
3. Submit questions and comments via the Questions panel

---

---

---

---

---

---

---

---



---

---

---

---

---

---

---

---



---

---

---

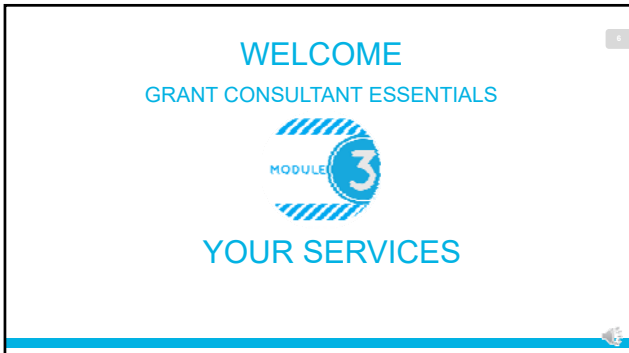
---

---

---

---

---



---

---

---

---

---

---

---

---

**WHAT YOU WILL DISCOVER**

- » What services do Grant Consultants offer?
- » How do you decide what services to offer?
- » How to find partners to meet your client's needs?
- » How do grant consultants package services?

---

---

---

---

---

---

---

---

**WHAT SERVICES DO GRANT PROFESSIONALS OFFER?**

MODULE 3

---

---

---

---

---

---

---

---

**INFINITY AND BEYOND**

The diagram features a central rocket launch. Three service icons are arranged around it: 'Service 1' (a classroom icon) at the top, 'Service 3' (a gear icon) at the bottom right, and 'Service 4' (a group of people icon) at the bottom left. Dotted lines connect the icons in a circular path, suggesting a continuous cycle or interconnected services.

---

---

---

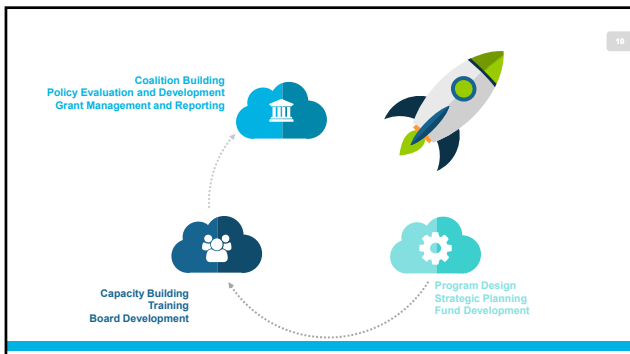
---

---

---

---

---



---

---

---

---

---

---

---

---



---

---

---

---

---

---

---

---



---

---

---

---

---

---

---

---

13

MODULE 3

# HOW TO IDENTIFY YOUR CONSULTING SERVICES

---

---

---

---

---

---

---

---



---

---

---

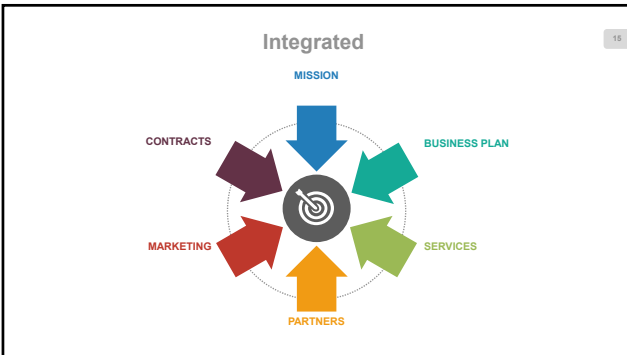
---

---

---

---

---



---

---

---

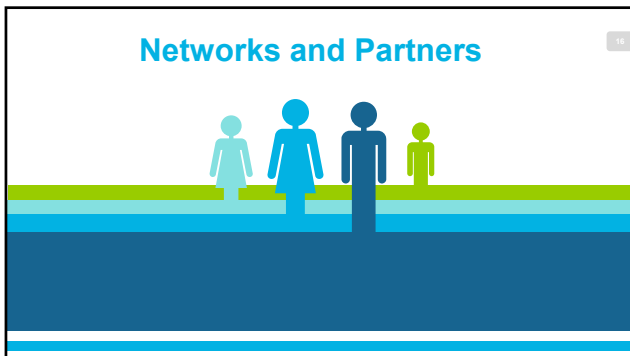
---

---

---

---

---



---

---

---

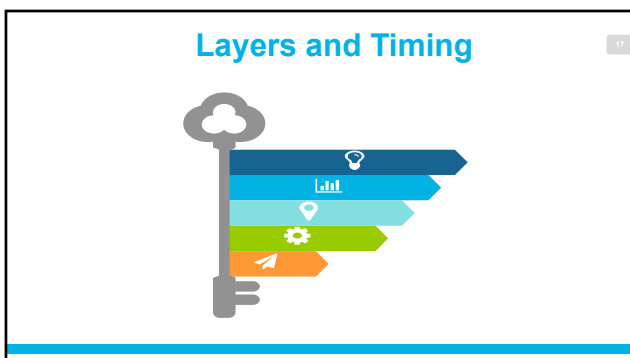
---

---

---

---

---



---

---

---

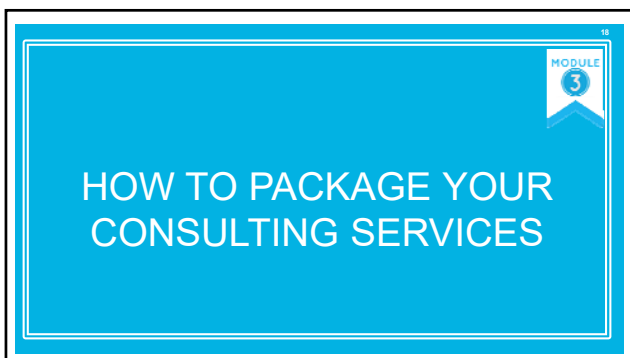
---

---

---

---

---



---

---

---

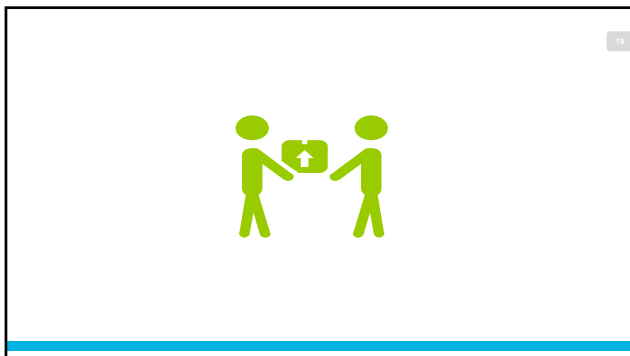
---

---

---

---

---



---

---

---

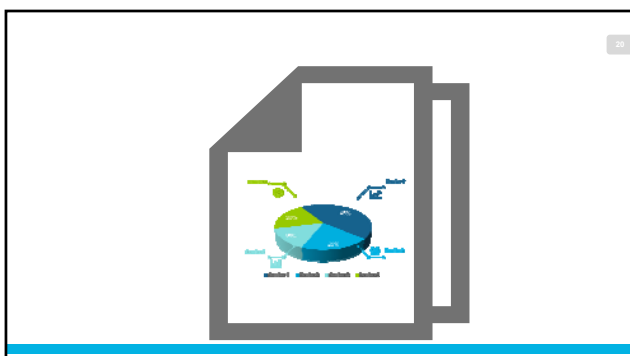
---

---

---

---

---



---

---

---

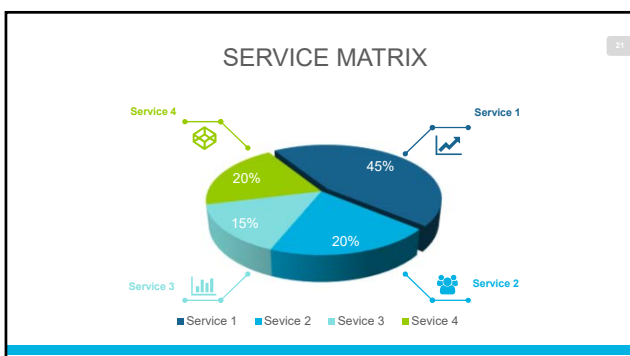
---

---

---

---

---



---

---

---

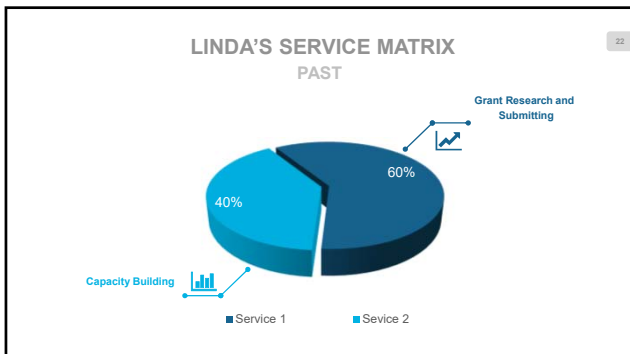
---

---

---

---

---



---

---

---

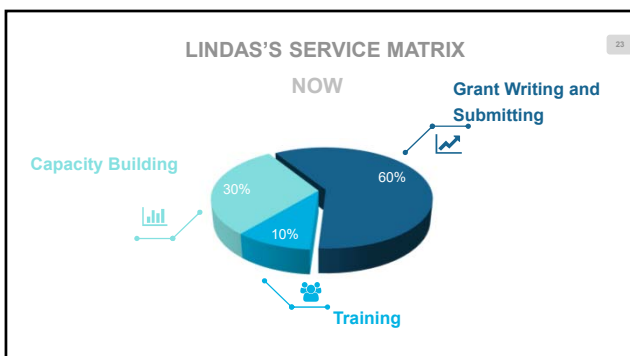
---

---

---

---

---



---

---

---

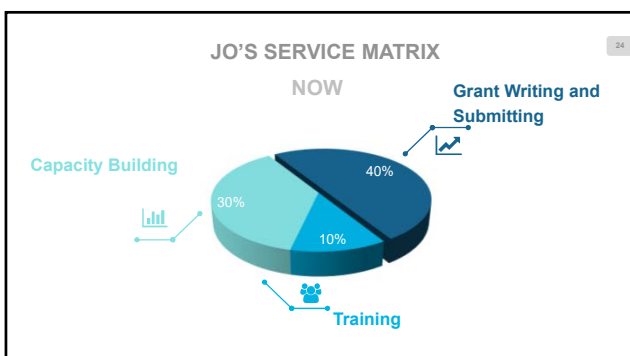
---

---

---

---

---



---

---

---

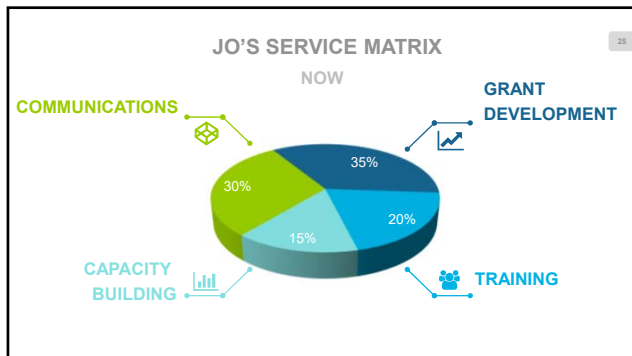
---

---

---

---

---



---

---

---

---

---

---

---

---

MODULE 3

## FINDING PARTNERS AND CREATING OPTIONS

---

---

---

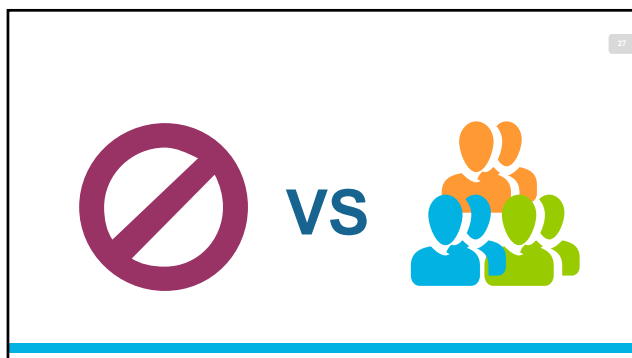
---

---

---

---

---



---

---

---

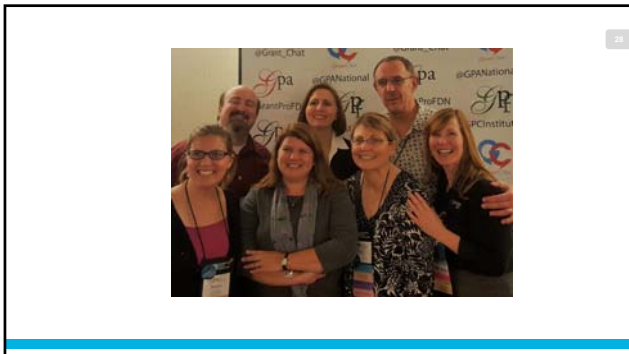
---

---

---

---

---



---

---

---

---

---

---

---

---



---

---

---

---

---

---

---

---



---

---

---

---

---

---

---

---



---

---

---

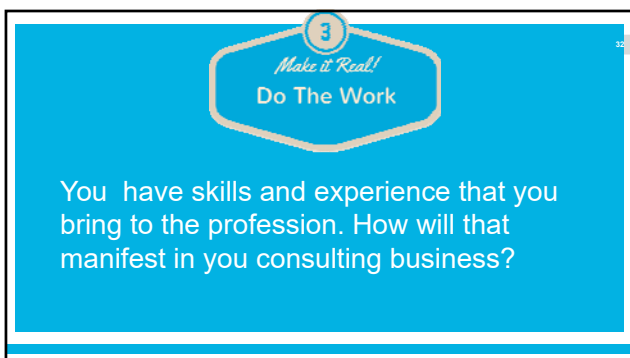
---

---

---

---

---



---

---

---

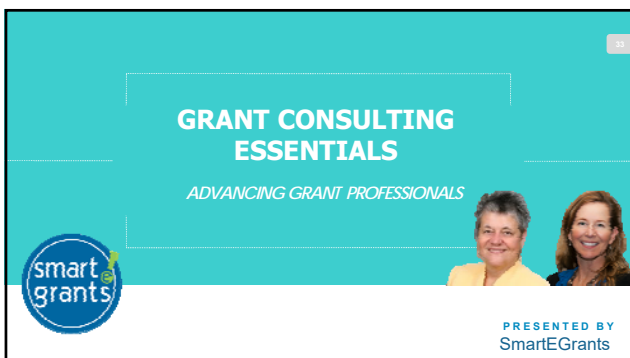
---

---

---

---

---



---

---

---

---

---

---

---

---